



reyna



**laminado de
alta presión** **H.P.L.**



HOMAPAL

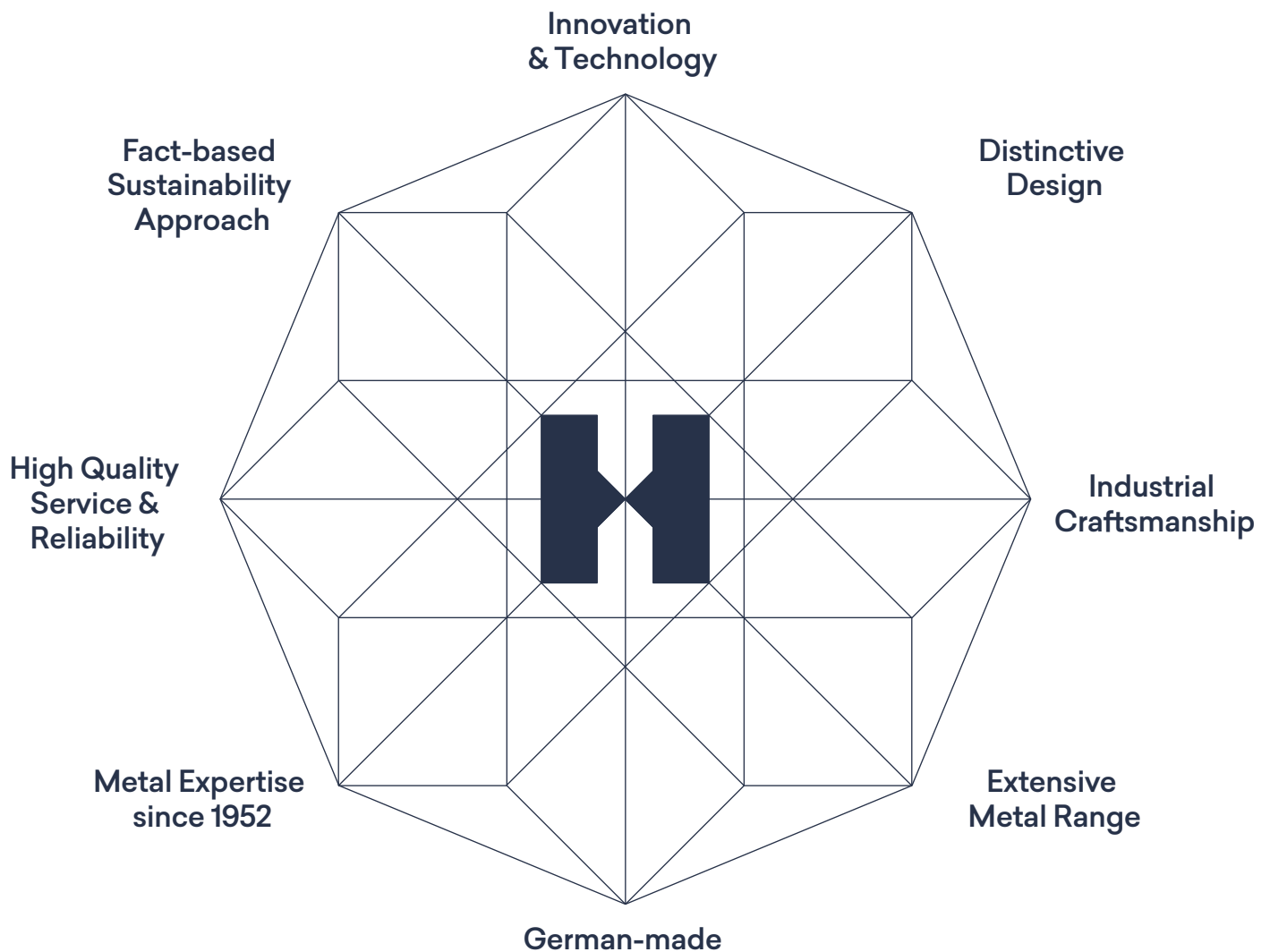


“We are shapers of surfaces.

We are conveyors of light, reflections, motion.

We bring energy and liveliness to interiors.

We are conductors of emotions.”





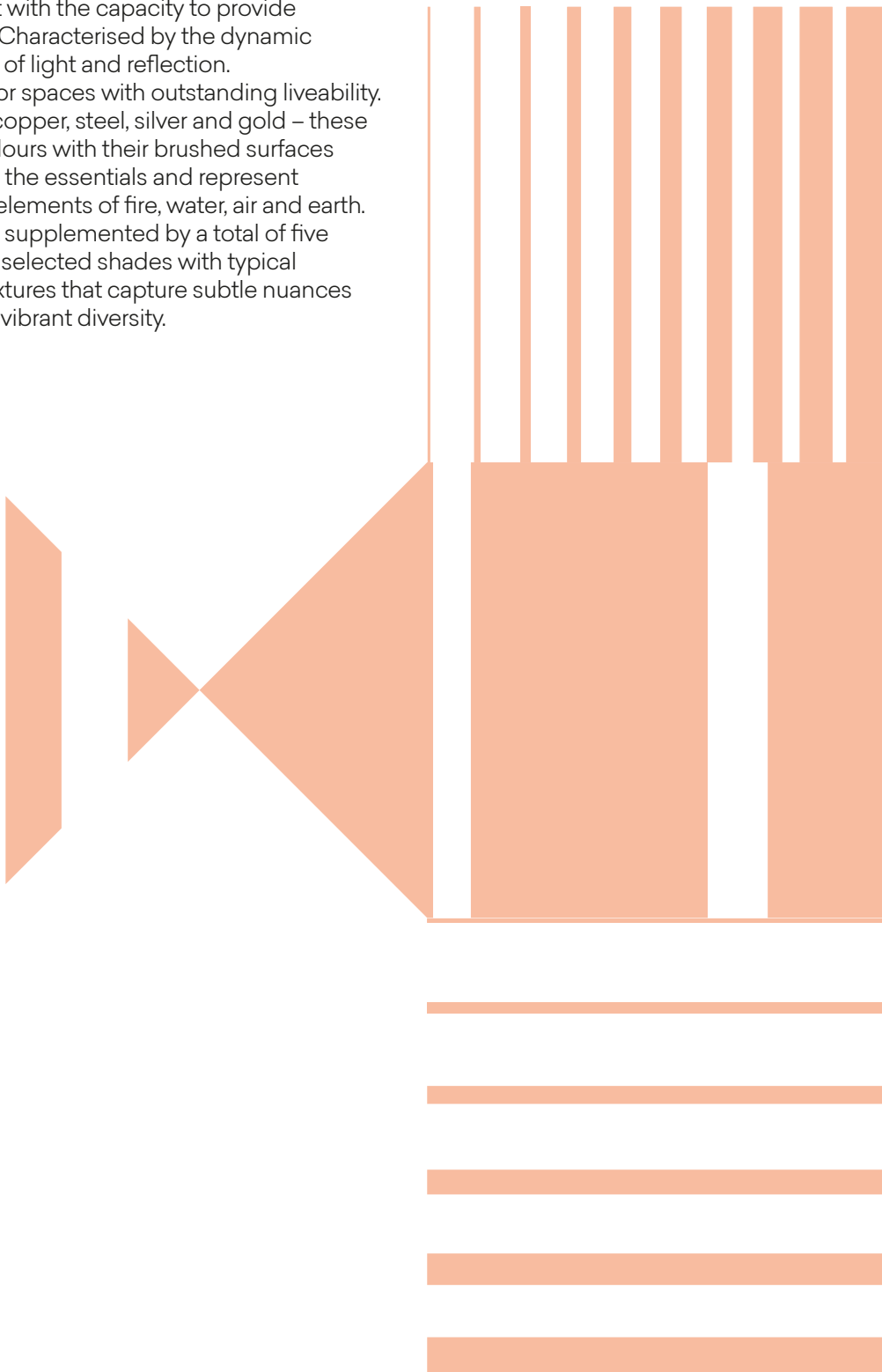
The Homapal European 2022 collection unites a variety of decorative metal laminates that could not be more different. Real metal decors stand out thanks to their mix of unique colours, individual surfaces and extraordinary haptics – a combination that is hard to imitate and creates unmistakable features in the world of interior design.

Homapal uses thin rolled foils made of aluminium, copper and stainless steel. A special embossing process gives the surfaces their unique textures. The European collection comprises more than 130 decors that cover a diverse spectrum in terms of their appeal, from classic to modern, from hand-designed to industrial chic. In the process, some completely new decors were developed, while familiar ones were also modified. The Homapal European collection combines the texture and colour of metal with hard-wearing, flexible and lightweight laminates.

The texture of metal surfaces enlivens the senses and creates inspiring ideas for interior designers. Metal also ensures variety and conjures up beautiful effects. Silver, gold, brass and copper bring a delicate sheen to highly creative designs.

Shaping emotions in interiors – Homapal metals breathe emotionality into every high-quality interior design project. They arouse our interest and change their appearance depending on the ambient light and time of day.

Elements capture the expressiveness of pure metal. Brilliant and full of energy. Cool, yet with the capacity to provide warmth. Characterised by the dynamic interplay of light and reflection. For indoor spaces with outstanding liveability. Bronze, copper, steel, silver and gold – these basic colours with their brushed surfaces focus on the essentials and represent the four elements of fire, water, air and earth. They are supplemented by a total of five carefully selected shades with typical metal textures that capture subtle nuances and add vibrant diversity.



Homapal Metals — Elements

Brushed Essentials



451 - Alu Brushed Bronzestone



447 - Alu Brushed Coppertone



441 - Alu Brushed Natural



546 - Alu Brushed Stainless Steeltone



442 - Alu Brushed Goldtone

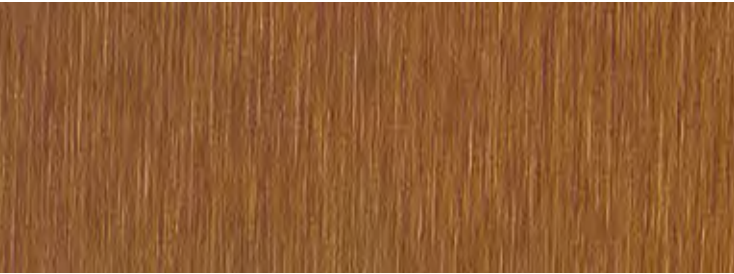
Brushed Tones



M5312 - Brushed Umbra



456 - Alu Brushed Medium Bronzestone



M6422 - Brushed Cupro



454 - Alu Brushed Rosegold



791 - Alu Brushed Natural Special ♦



796 - Alu Brushed Steeltone Special ♦



446 - Alu Brushed Steeltone / 409/000 - Alu Brushed Steeltone ●



448 - Alu Brushed Black



M5311 - Brushed Argent



M6423 - Brushed Brass



794 - Alu Brushed Goldtone Special ♦



325 - Alu Brushed Champagne

● industrial quality

♦also available with Adverso (AD) surface

Homapal Metals — Elements

Crossbrushed



439 - Alu Crossbrushed Brownish Grey



437 - Alu Crossbrushed Coppertone



431 - Alu Crossbrushed Natural



433 - Alu Crossbrushed Stainless Steeltone



434 -Alu Crossbrushed Goldtone



Plain Polished



M2006 - Alu Plain Polished Bronzestone



347/000 - Alu Plain Polished Coppertone

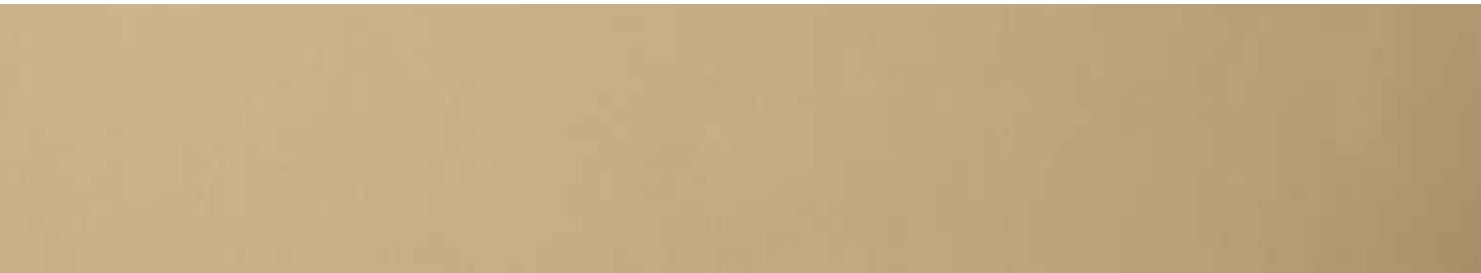


444N - Alu Plain Polished Natural

820/000 - Alu Softmatt Natural / ●



475/000 - Alu Plain Polished Gunmetal Matt



342/000 - Alu Plain Polished Goldtone

Mirror Polished



473 - Alu Mirror Polished Tea



477 - Alu Mirror Polished Coppertone



470 - Alu Mirror Polished Superior Natural

485/000 - Alu Mirror Polished Special Natural ●



474 - Alu Mirror Polished Smokey Grey



471 - Alu Mirror Polished Goldtone

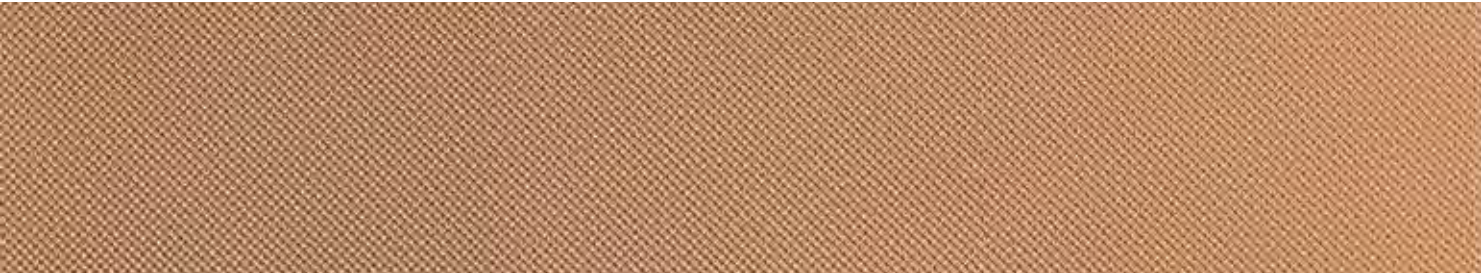


Homapal Metals — Elements

Plex



807/980 - Alu Plex Bronzestone



M6424 - Plex Copper



M5308 - Plex Aluminium



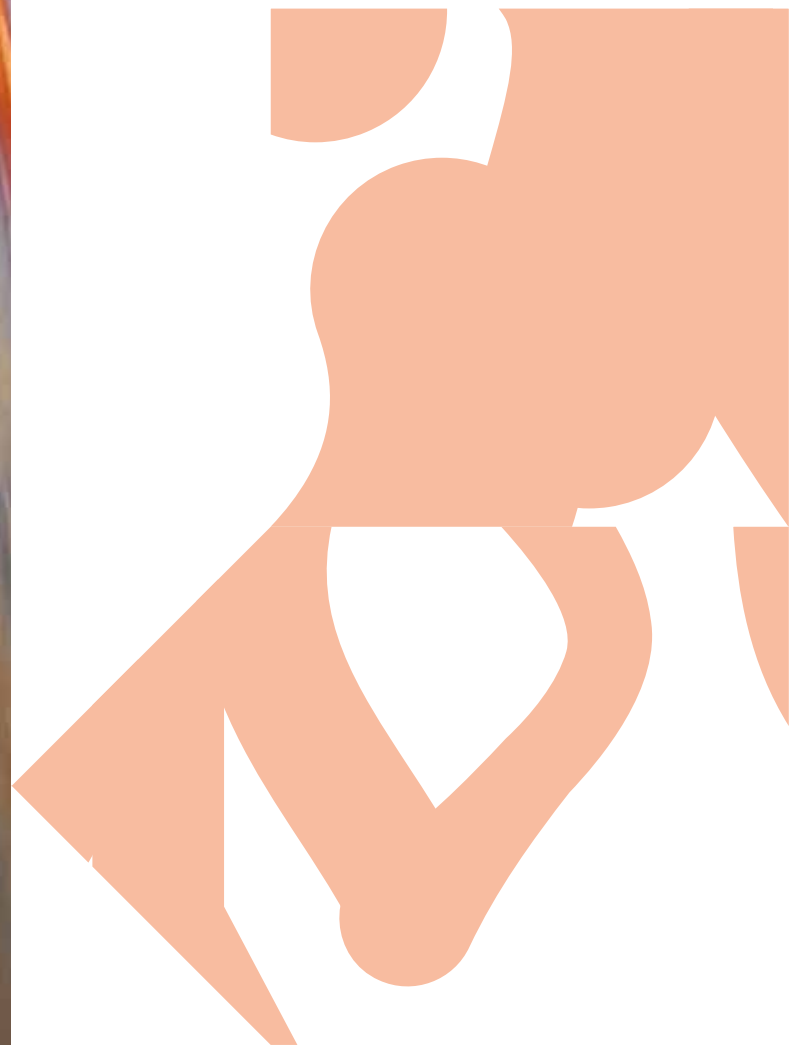
423/980 - Alu Plex Stainless Steeltone



M5309 - Plex Gold



M6426 - Plex Brass



No two surfaces are alike. Each one is unique. As if created by the hand of an artist. Harnessing the infinite possibilities that metals offer. Everything reappears in new splendour, time and again. As if deliberately altered.

An initial, fleeting handmade gesture that enters the consciousness permanently.

For a sense of individuality that evolves over time. The perfect combination for exclusive, distinctive designs.

The skilled people at the Homapal factory are also dedicated to traditional metal-finishing processes. True masters of their craft work here – talented and highly trained creatives with many years of experience working with metals.

At the heart of their work are thinly rolled foils made of aluminium, copper and brass. With elaborate mechanical techniques and expert attention to detail, they play with the creative properties and flexibility of these metals. Grinding, dabbing, colour intensification skilled artisans give these metals structure, brush and polish them mechanically, and colour them by hand.

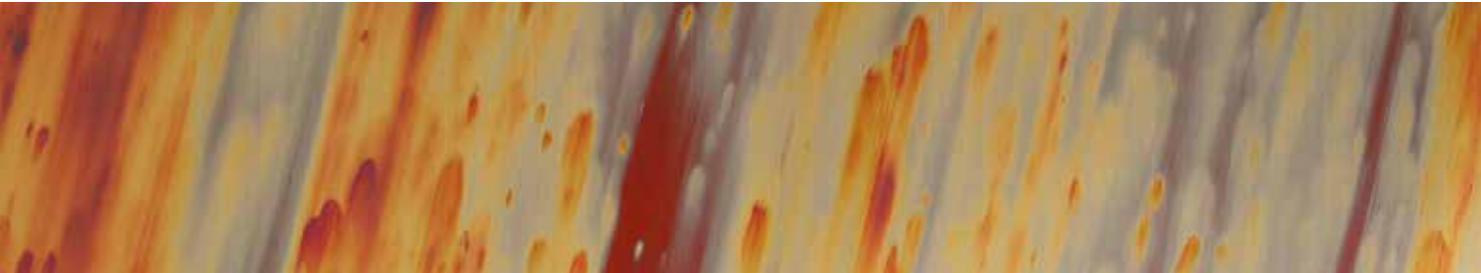
This is where our **Gestures** first come to life.

Homapal Metals — Gestures

* vertical joint at about 610 mm



500/491 - Brass Plain Antique *



695D - Copper Stratos Diagonal



490 - Copper Antique



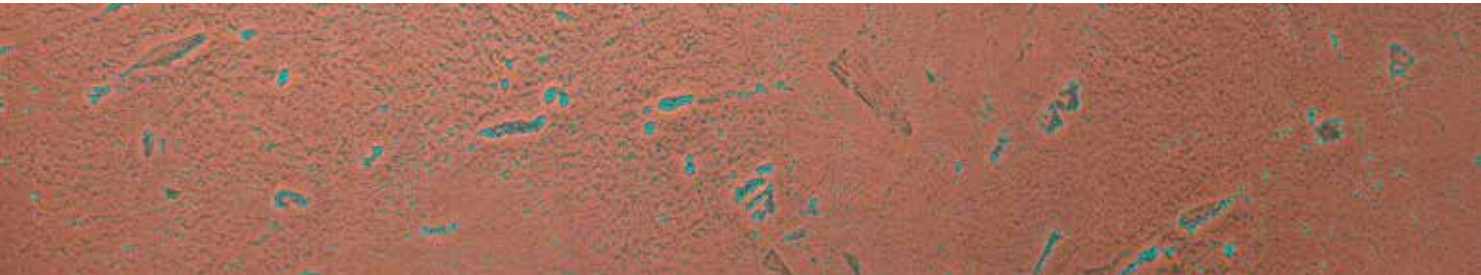
M5392 - Copper Veil



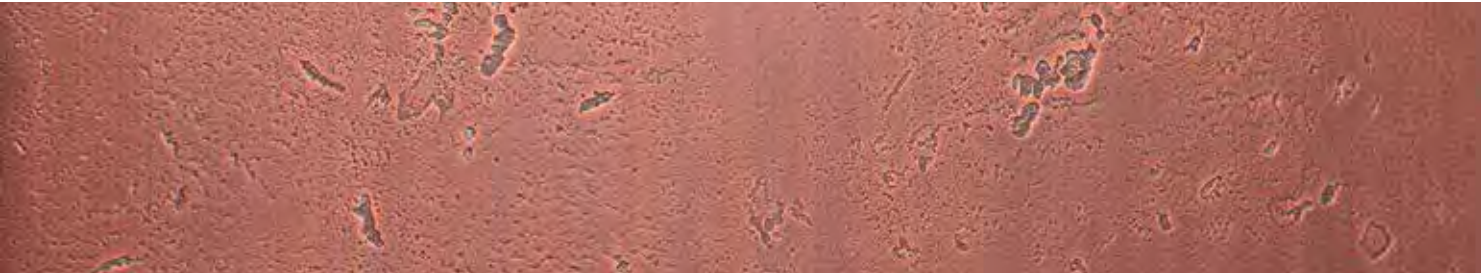
M5391 - Graphite Veil



M8547 - Matte Oxibronze *



635/502 - Copper Moon Turquoise



636/502 - Copper Moon Dark



M9958 - Antique Rubbed Copper



800/200 - Alu Crush



M4512 - Alu Crush Goldtone



401/229 - Copper Crush Stipple



Homapal Metals — Gestures

* vertical joint at about 610 mm



401/200 - Copper Crush



637/502 - Copper Moon Light

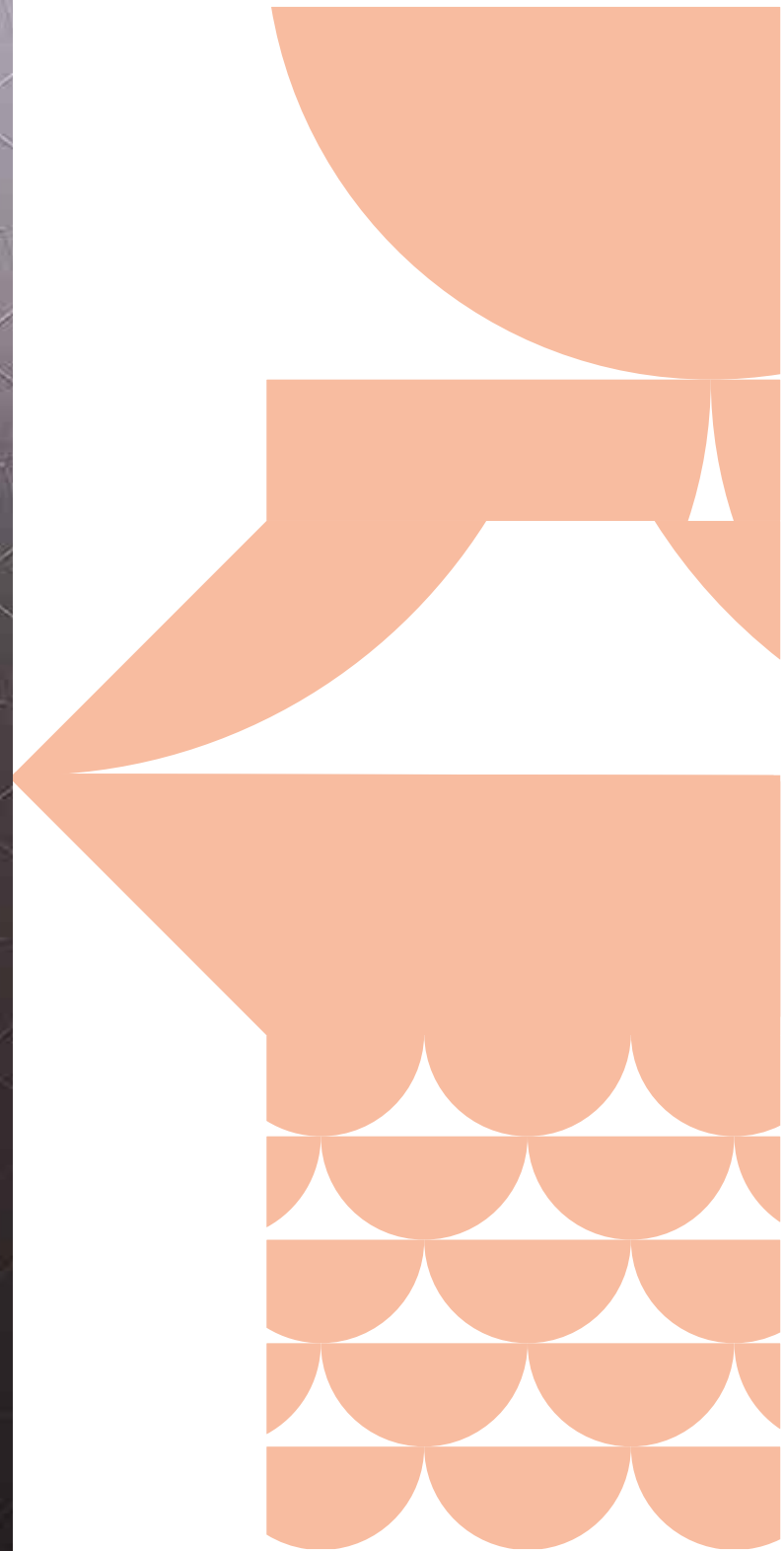


630 - Copper Black Patinated

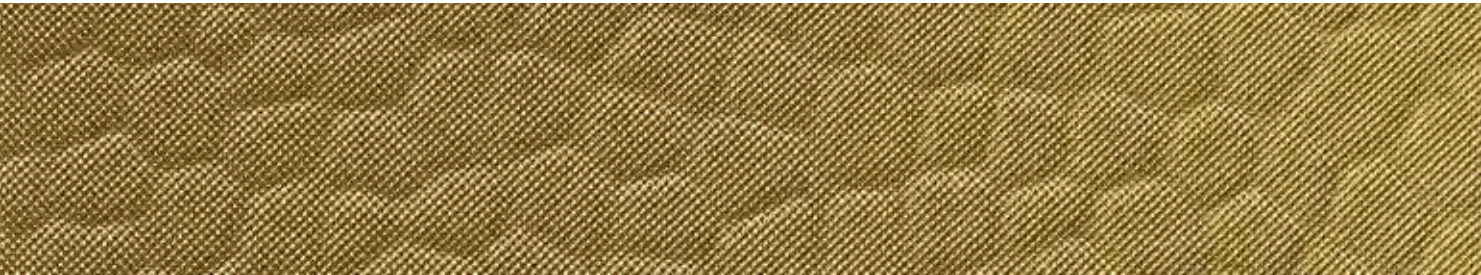


500/502 - Brass Moon *

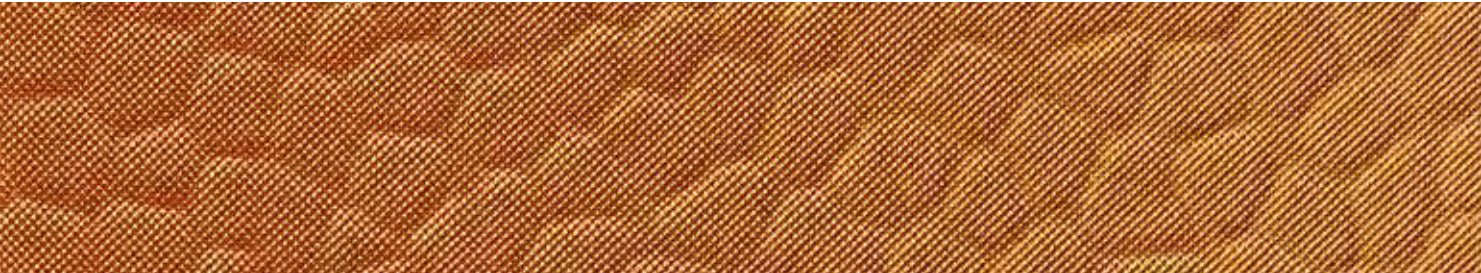
Surfaces seemingly from another world. Imaginative, lively, exciting. Always with that special allure that captivates and exhorts to touch. Formed organically, developed mathematically or derived from the necessity of industrial requirements – **Perspectives** invite you to discover the diversity of the world, to observe and feel it from different, even unexplored sights. A bubbling metallic bath, the Earth's features imaged from space, wind-generated waves over the sea, raindrops on a calm lake or irregular hexagonal elements that appear soft and warm due to their textile structure. Reflected light dances over these reliefs, which are themselves animated by nature. In Depths, nothing seems to stand still. The graphic patterns of **Geometries**, on the other hand, radiate calm and balance. Regular lines form rhombuses or plaits. The contours become stronger or weaker depending on the incidence of light. **Industrial** draws its inspiration from the forgotten treasures of factory floors. Discover sheet-metal textures adorned with diverse grinding and storage marks, holes and grid patterns.



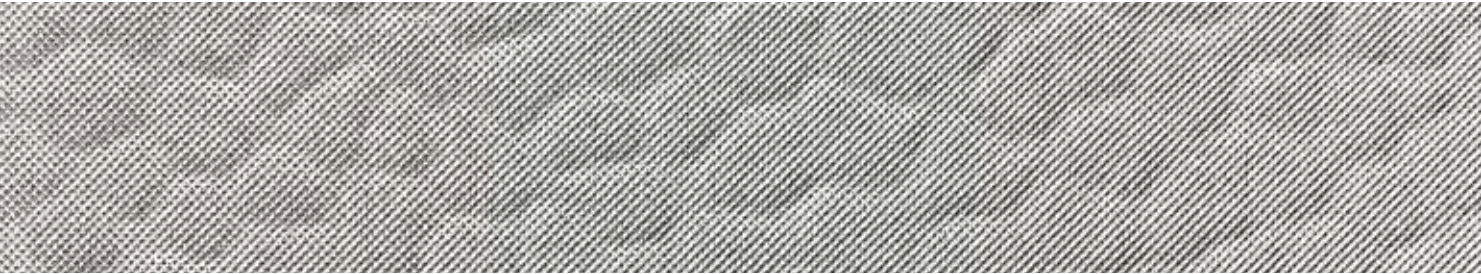
Homapal Metals — Perspectives / Depths



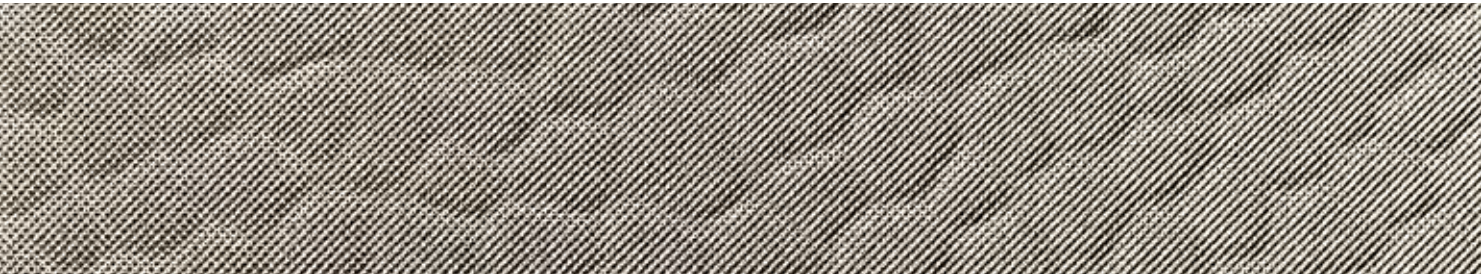
M6430 - Hammered Brass



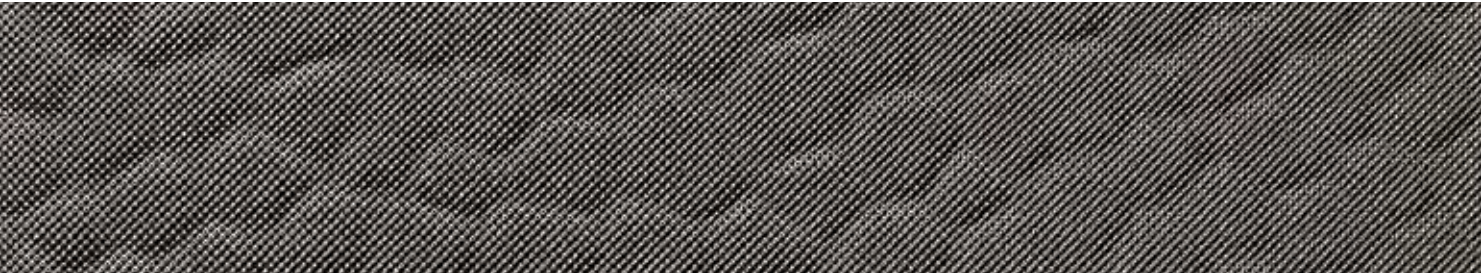
M6429 - Hammered Cupro



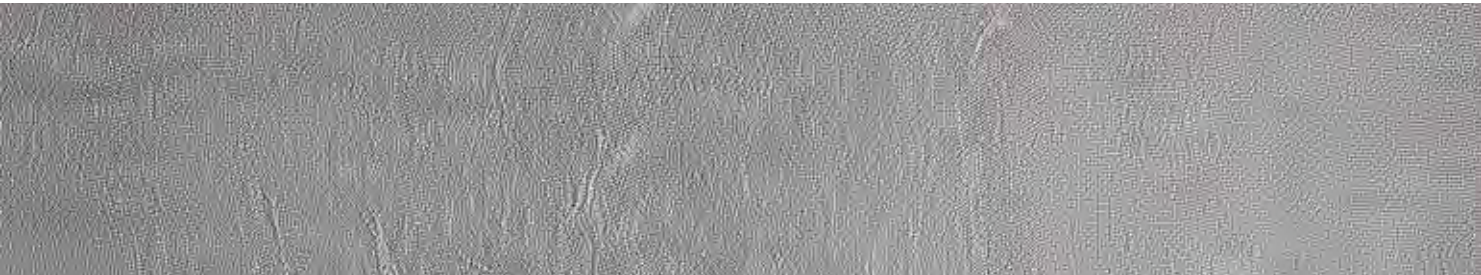
M6427 - Hammered Aluminium



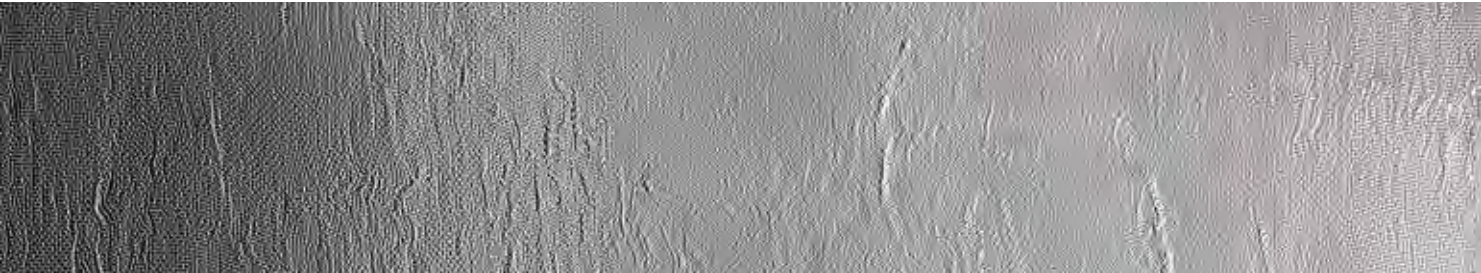
M6428 - Hammered Argent



M6431 - Hammered Graphite



800/100 - Alu Mesh Natural



470/100 - Alu Mirror Polished Mesh Natural



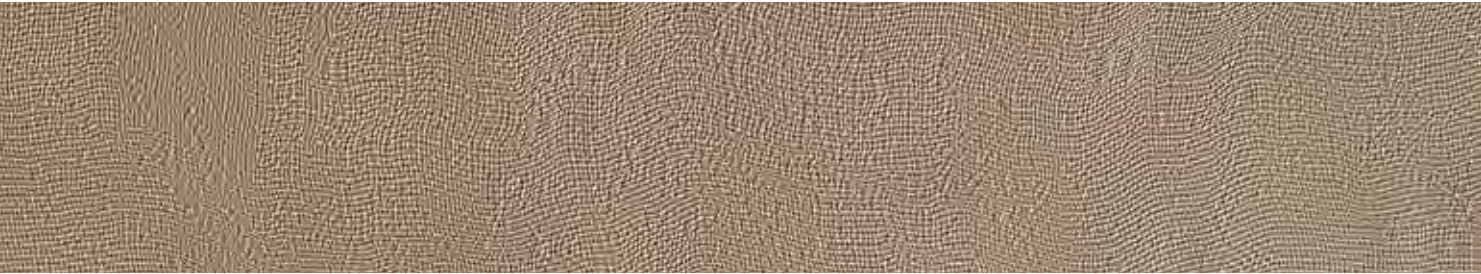
471/100 - Alu Mirror Polished Mesh Goldtone



825/100 - Alu Mesh Champagne



459/100 - Alu Mesh Anthracite



451/100 - Alu Mesh Bronzestone



Homapal Metals — Perspectives / Depths



447/966 - Alu Cella Coppertone



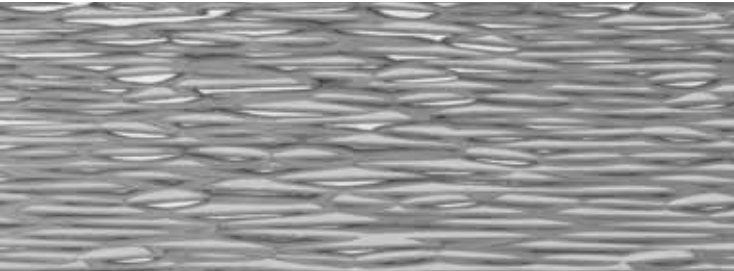
704/966 - Alu Cella Goldtone



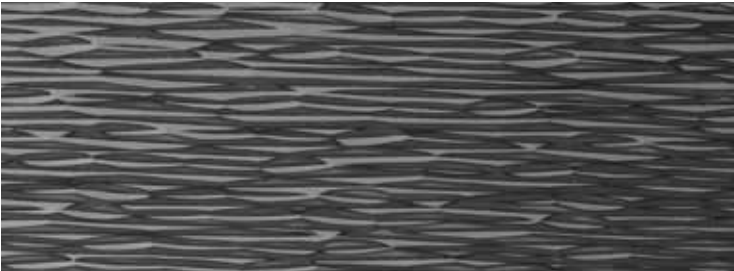
477/966 - Alu Mirror Polished Cella Coppertone



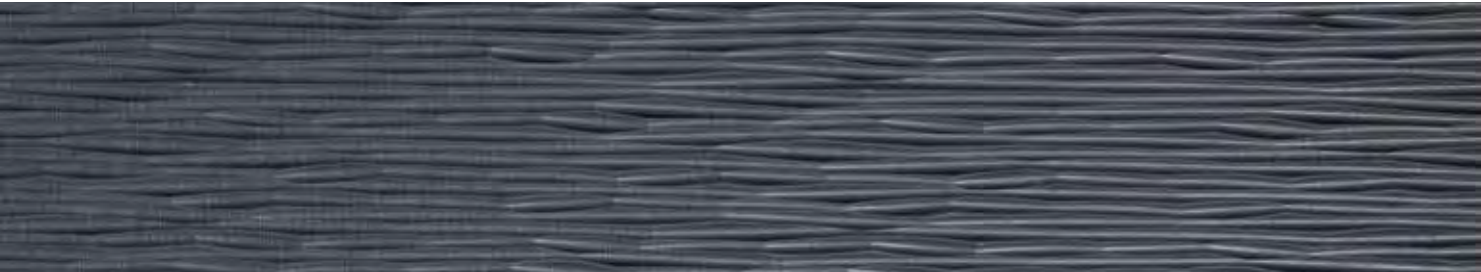
471/966 - Alu Mirror Polished Cella Goldtone



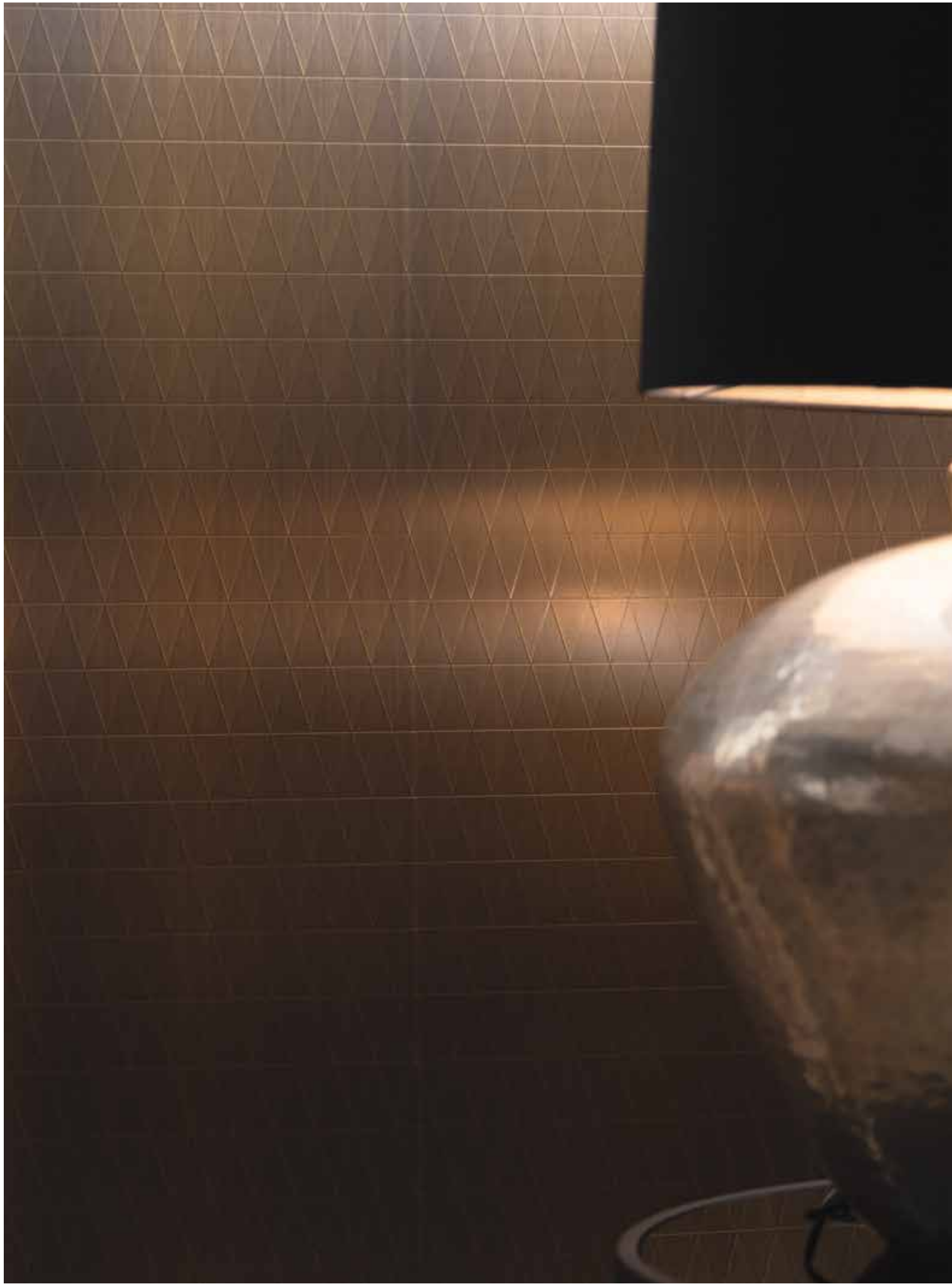
470/966 - Alu Mirror Polished Cella Natural



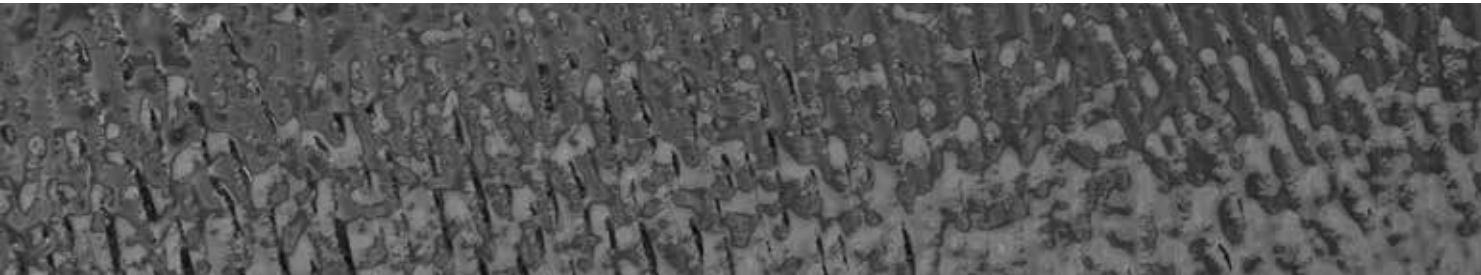
474/966 - Alu Mirror Polished Cella Smokey Grey



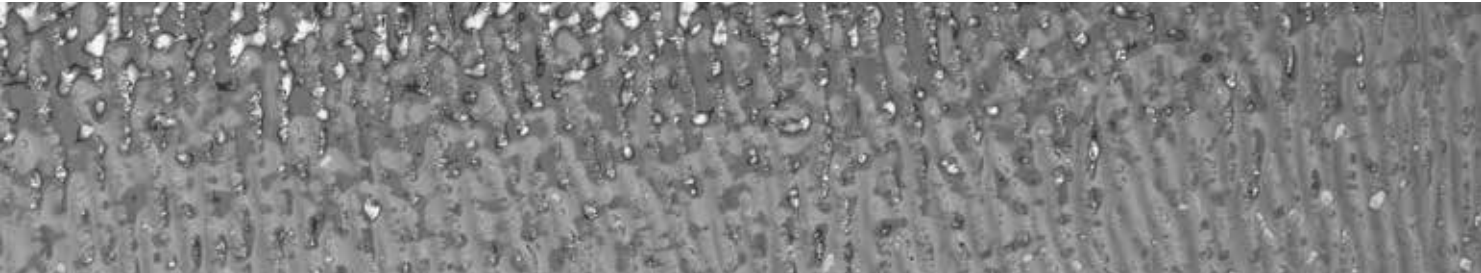
448/966 - Alu Cella Black



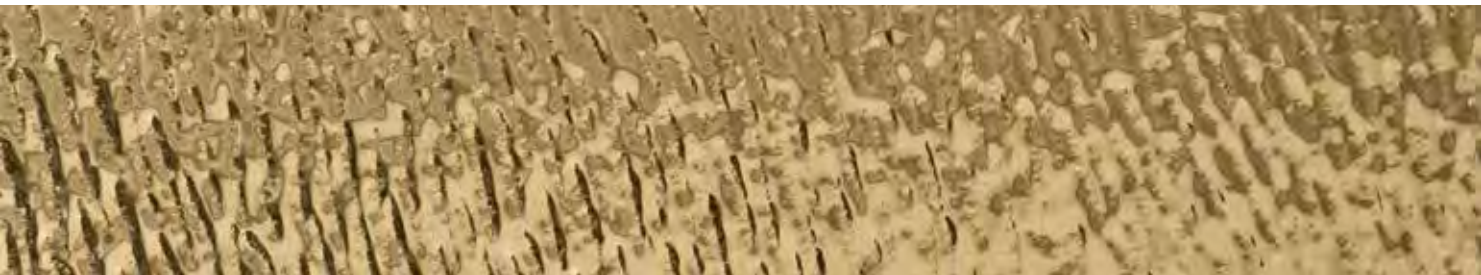
Homapal Metals — Perspectives / Depths



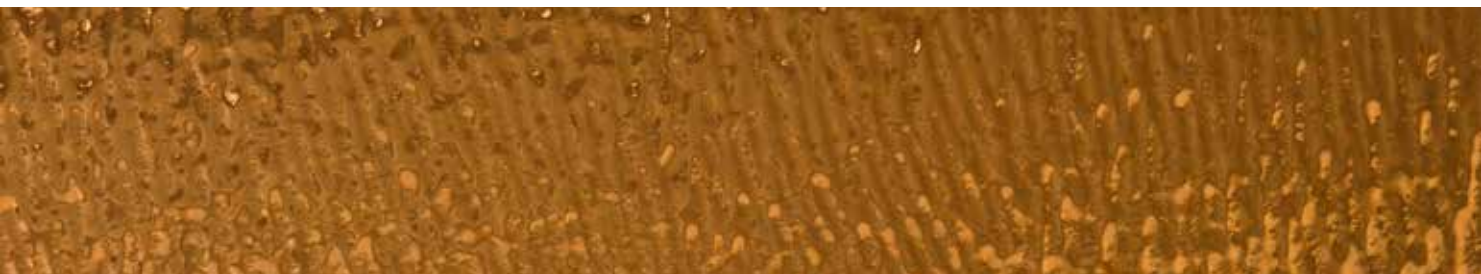
474/124 - Alu Mirror Polished Cascade Smokey Grey



470/124 - Alu Mirror Polished Cascade Natural



471/124 - Alu Mirror Polished Cascade Goldtone



477/124 - Alu Mirror Polished Cascade Coppertone



473/124 - Alu Mirror Polished Cascade Tea

Homapal Metals — Perspectives / Depths



470/636 - Alu Mirror Polished Lava Natural



475/636 - Alu Plain Polished Lava Gunmetal Matt



474/636 - Alu Mirror Polished Lava Smokey Grey



471/636 - Alu Mirror Polished Lava Goldtone



477/636 - Alu Mirror Polished Lava Coppertone



473/636 - Alu Mirror Polished Lava Tea

Homapal Metals — Perspectives / Geometries

* vertical joint at about 610 mm



807/340 - Alu Diamond Bronzestone



500/340 - Brass Diamond Antique *



690/340 - Copper Diamond Antique



325/360 - Alu Brushed Sapphire Champagne



451/360 - Alu Brushed Sapphire Bronzestone



454/360 - Alu Brushed Sapphire Rosegold



455/360 - Alu Brushed Sapphire Graphite



Homapal Metals — Perspectives / Industrial



444/920N - Alu Riffel Horizontal Natural



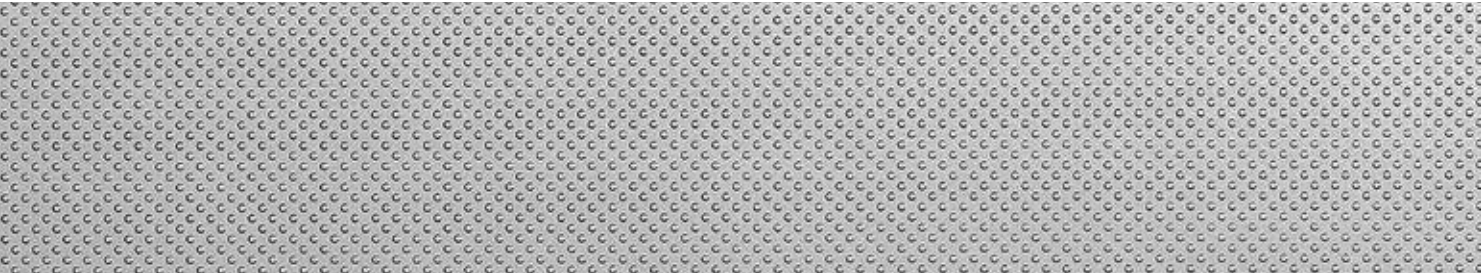
469/920N - Alu Riffel Horizontal Anthracite



446/920 - Alu Riffel Horizontal Steeltone



641/000 - Stainless Steel Brushed



856 - Alu Dots Steeltone



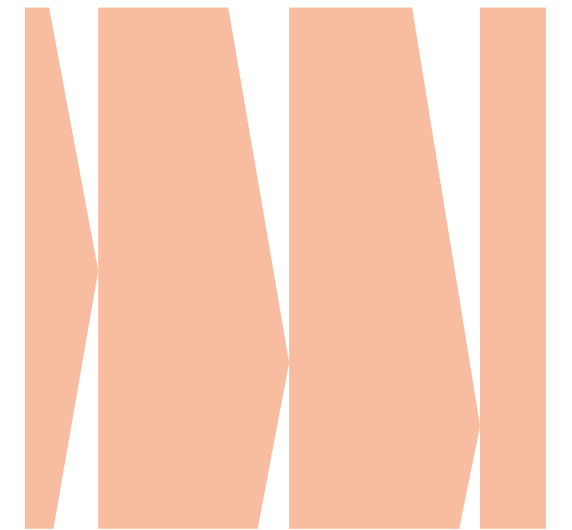
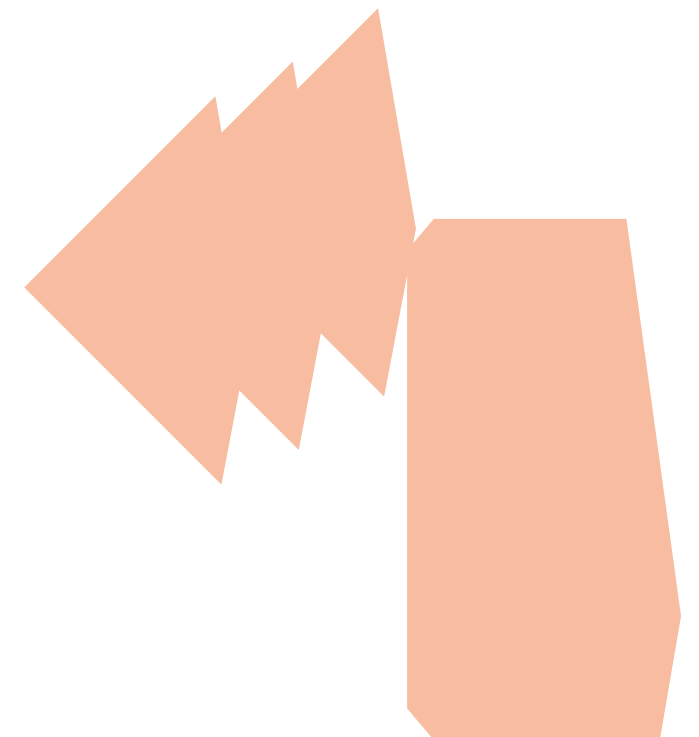
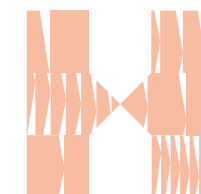
In direct response to customer requirements, Homapal has developed **SRM – Scratch Resistant Matt**, a highly scratch resistant matt surface with anti-fingerprint properties. **SRM – Scratch Resistant Matt** proves its durability in interior applications that are subject to heavy use and, for the first time ever, allows planners and architects to use real metal on horizontal surfaces.

Homapal is setting new standards with this surface technology. Building on the brand's historical strengths in Germany and the visual and tactile properties of metal as a material, this technology sets the course for the future. The **new SRM – Scratch Resistant Matt** surface makes high-quality metal surfaces appealing to a growing number of architects and planners. The trend towards industrial chic and the desire for intrinsic value are constantly putting metal in the limelight – metal is particularly appealing for interior design applications as it opens up extraordinary design solutions as well as novel visual and haptic effects. Metals have always held a great fascination because they behave so differently to other materials.

Gold, for example, is associated with warmth, light and the sun, while copper, as a Venusian metal, embodies beauty, gentleness and vibrancy. Metal laminates from Homapal produce shimmering shades of gold, silver, brass or copper – and create a unique ambience thanks to partially handcrafted aesthetics that set the stage for exciting interior applications.

With their unique textures, the velvety-smooth, matt SRM metal surfaces stand out from the crowd and inspire new design concepts. Extraordinary effects can be achieved with metals – their ability to create contrasts in both warm and cold colours, and to be rigid and seemingly malleable at the same time make them truly special materials. These unique characteristics make it possible to achieve extraordinary effects and create genuine highlights using metal laminates.

Furthermore, the **SRM – Scratch Resistant Matt** collection extends the design options for vertical surfaces almost infinitely thanks to the suitability of Homapal metal laminates for horizontal applications.





Scratch Resistant Matt, or SRM for short, is fit for typical horizontal use, for example in trade-fair and shopfitting applications, for counters and tables in bars and restaurants, for work surfaces in offices, and also in the contract sector, such as in hotels. We use a special process to create the super-matt finish with anti-fingerprint properties and special depth effect. The result is a highly abrasion-resistant surface with regular and thus durable structures in high-end quality. In keeping with the spirit of the times, SRM can be found on selected on-trend decors with various textures and colours.

Homapal Metals — SRM Scratch Resistant Matt



820/000 SRM - Alu Softmatt Natural SRM



441 SRM - Alu Brushed Natural SRM



444N SRM - Alu Plain Polished Natural SRM



447 SRM - Alu Brushed Coppertone SRM



451 SRM - Alu Brushed Bronzestone SRM



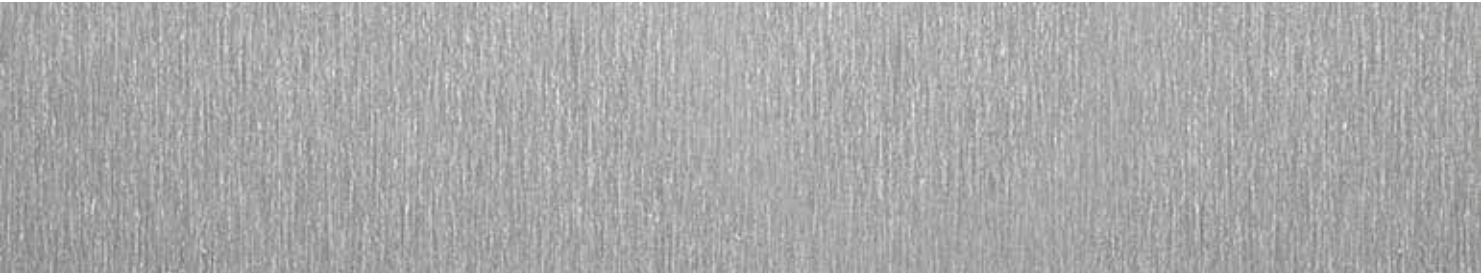
454 SRM - Alu Brushed Rosegold SRM



325 SRM - Alu Brushed Champagne SRM



456 SRM - Alu Brushed Medium Bronzestone SRM



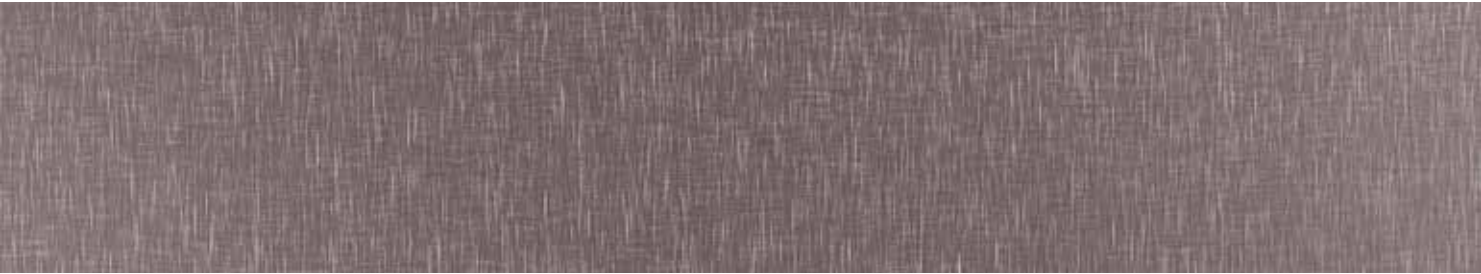
446 SRM - Alu Brushed Steeltone SRM



455/000 SRM - Alu Brushed Graphite SRM



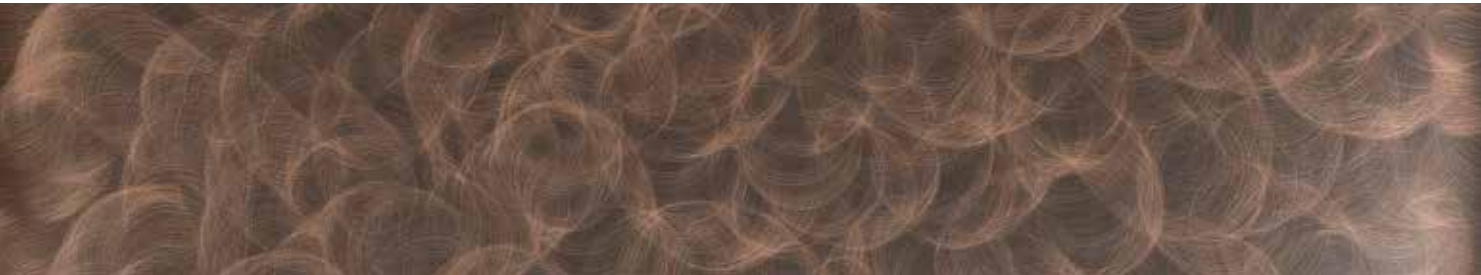
431 SRM - Alu Crossbrushed Natural SRM



439 SRM - Alu Crossbrushed Brownish Grey SRM

Homapal Metals — SRM Scratch Resistant Matt

* vertical joint at about 610 mm



401/200 SRM - Copper Crush SRM



401/229 SRM - Copper Crush Stipple SRM



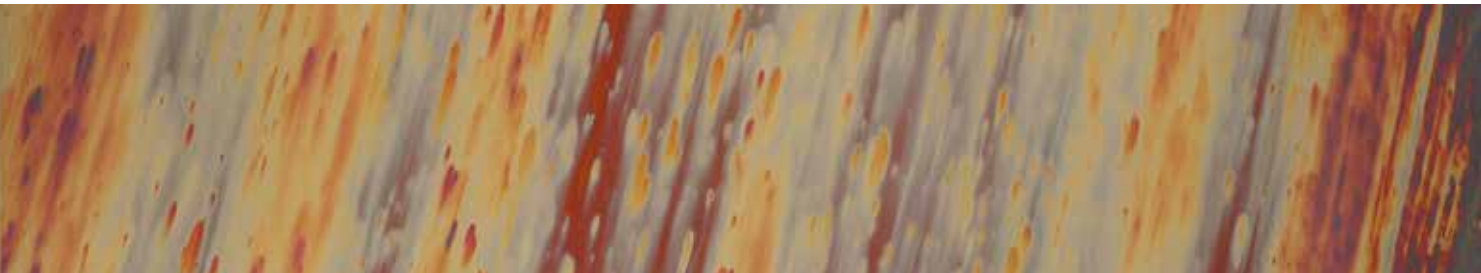
800/200 SRM - Alu Crush SRM



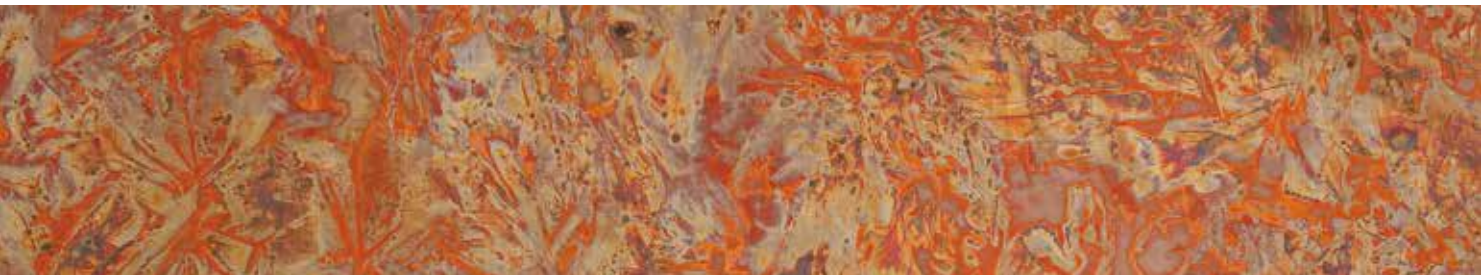
500/340 SRM - Brass Diamond Antique SRM *



690/340 SRM - Copper Diamond Antique SRM



695D SRM - Copper Stratos Diagonal SRM



490 SRM - Copper Antique SRM



Magnetic appeal for flexible presentations

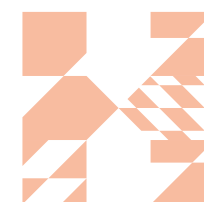
Every successful project, every innovative campaign and every novel product starts with a good idea. This is usually the brainchild of an entire team that has worked on it intensively. Ideas often arise during mind-mapping sessions in the conference or seminar room. These communicative processes, which allow spontaneous ideas and suggestions to be collected and are probably the most popular method for generating innovative ideas as group, are perfectly supported by the magnetic whiteboards from Homapal. Whether maps, posters or plans are attached to the magnetic boards as mind-mapping prompts during seminars, or notes and key information are jotted on their writable surfaces with board markers and chalk – everything can be effortlessly removed afterwards without leaving a trace (kindly refer to our latest guidelines available on our website).

Individuality and design

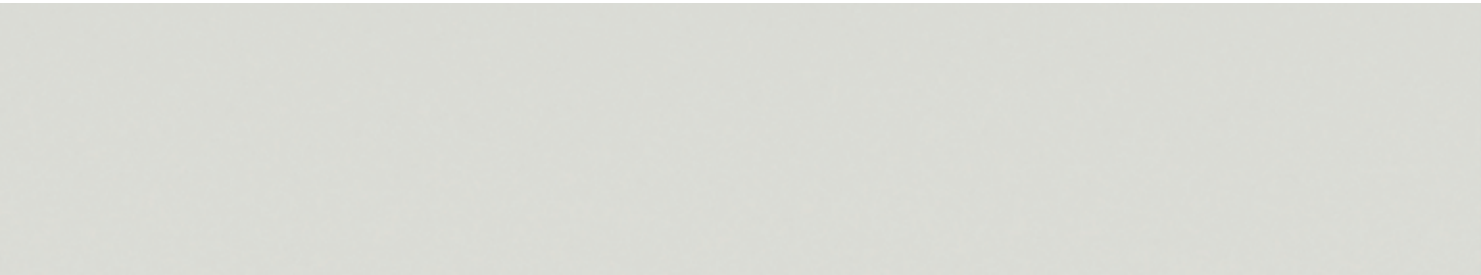
The afternoon menu is written in white on a black chalk background. A large magnetic wall informs guests about your current offers, such as Sunday brunch or a romantic dinner including overnight stay. The more digital the times become, the more personal handwritten notes appear. The same applies to magnetic boards that can be written on using board markers or chalk – they are aesthetic, useful and the embodiment of urban chic. Whether in a restaurant, bar, hotel or shop window – hand-written lettering exudes a special charm. Each letter is unique and it is precisely the small imperfections that bring the words to life. In other words, hand-written text increases the perceived value of products and offers by adding the human touch.

Functionality generates flexibility

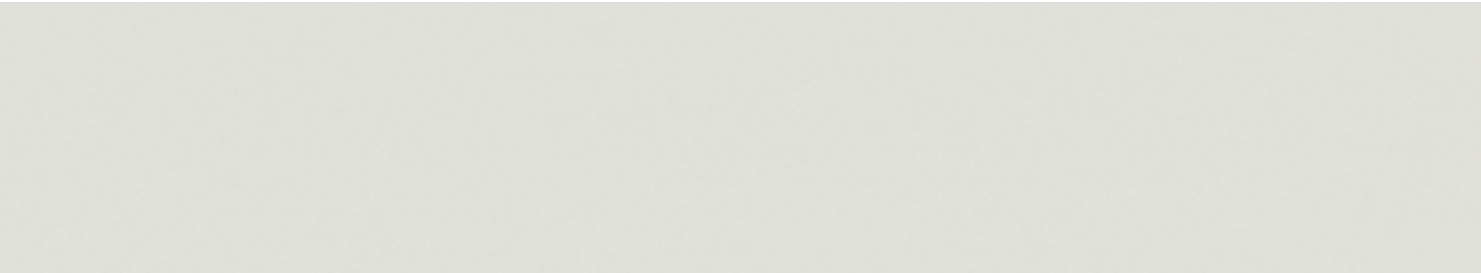
In fast-moving times, flexibility is key. Tastes and styles change quickly. Among the major trends in shopfitting are flexibly designed shop floors that allow the creation of hybrid spaces. Homapal magnetic boards bring mobility and flexibility to any product presentation thanks to their functional properties, and their wide range of basic and on-trend colours opens up an almost limitless variety of designs. Designing walls is one thing. Ensuring they offer useful functionality, quite another. Our magnetic boards combine the best of both worlds. As well as being highly magnetised, most of our decors can be written on, either with commercially available board markers or chalk. At any time, the boards can be wiped clean without leaving residue. The highly magnetic iron foil embedded in the laminate lets you attach not only lightweight documents and utensils to the wall, but also heavier magnetic shelves for shopfitting presentations, the tools needed in the workplace, or modular rails and shelves to hold small appliances or kitchen spices, for example. There are thus no limits to your creativity.



Homapal — Magnetic & Boards



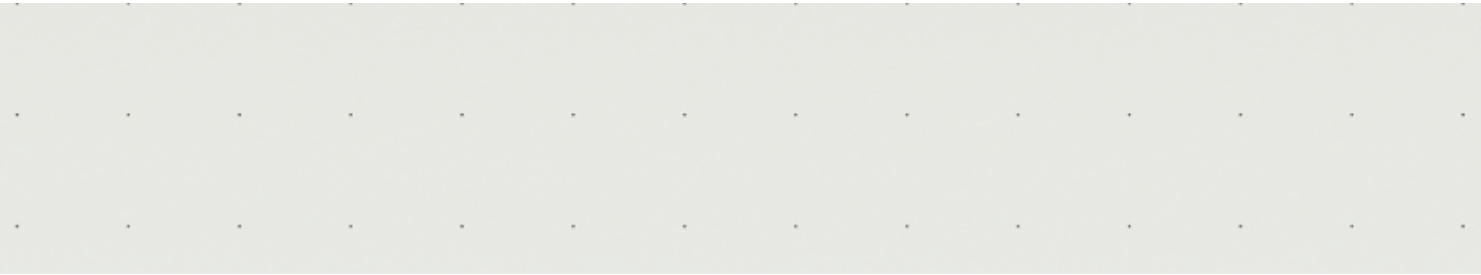
8207 - Magnetic Board White Matt (projection and board marker)



8206 - Magnetic Board White Glossy (board marker)



8225 - Magnetic Board Stone Grey Matt (chalk)



8202 - Magnetic Board White Glossy with grid points (board marker)



8224 - Magnetic Board Stone Grey Glossy (board marker)



8231 - Magnetic Board Alu Crossbrushed Natural



8276 - Magnetic Board Curry Matt (chalk)



8208 - Magnetic Board Light Grey Glossy (board marker)



8277 - Magnetic Board Curry Glossy (board marker)



8259 - Magnetic Board Apple Green Matt (chalk)



8232 - Magnetic Board Apple Green Glossy (board marker)



8211 - Magnetic Board Green Matt (chalk)



8233 - Magnetic Board Macchiato Glossy (board marker)



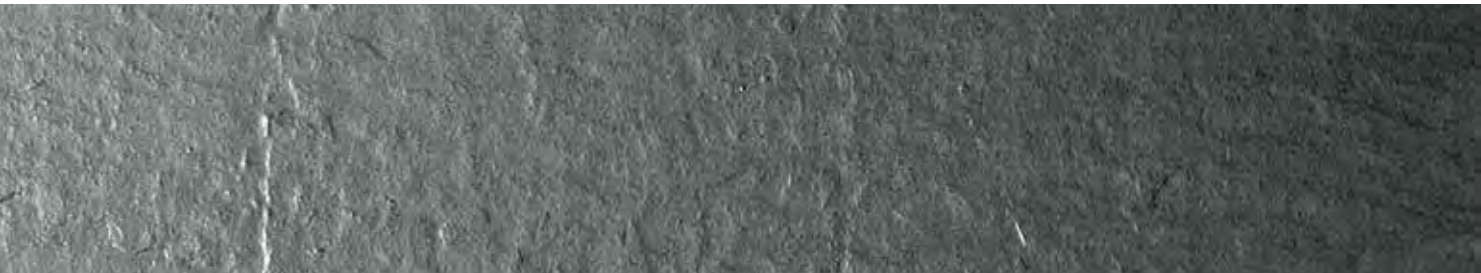
8234 - Magnetic Board Macchiato Matt (chalk)



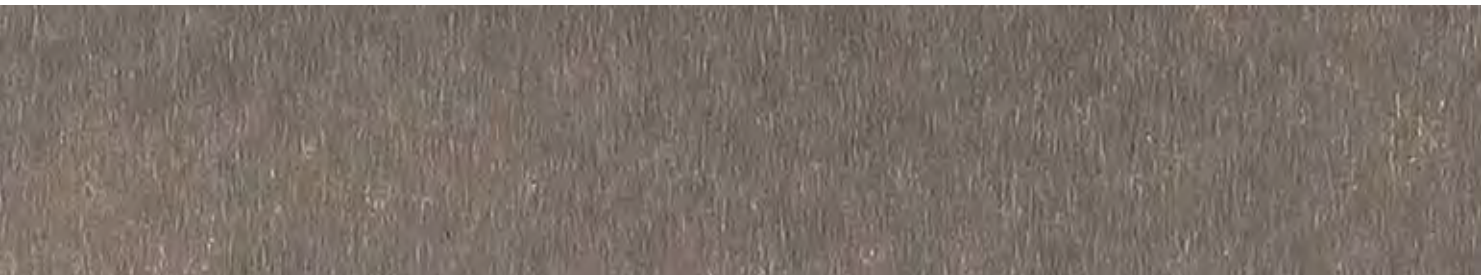
8253 - Magnetic Board Wine Red Matt (chalk)



8214 - Magnetic Board Smokey Blue Matt (chalk)



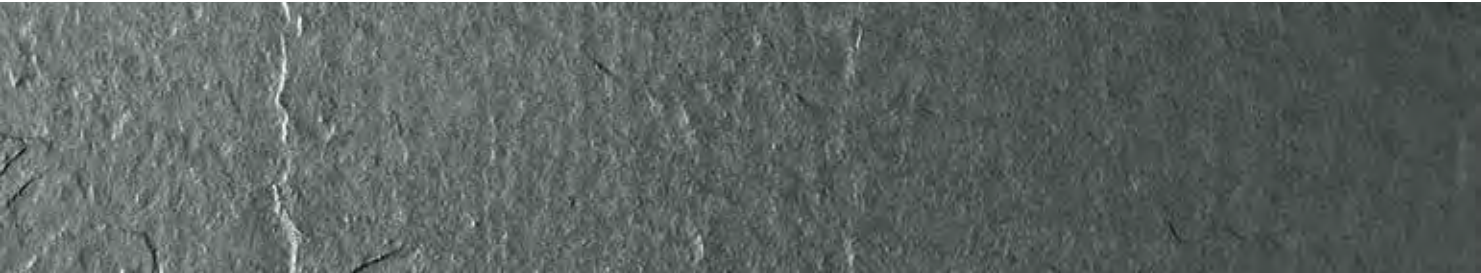
8267 - Magnetic Board Slate Black



8200 - Magnetic Board for individual finish



8205 - Magnetic Board Black Matt (chalk)



205 - Melamine Slate Black *



205/000U - Melamine Black Matt (chalk) *



211/000U - Melamine Green Matt (chalk) *

LIST OF DECORS

Homapal Code	Decor Name	Range	Thickness	Size	Balancer
205	Melamine Slate Black (without magnetic effect)	Magnetic & Boards	1.0	a, b	012
205/000U	Melamine Black Matt / chalk (without magnetic effect)	Magnetic & Boards	1.0	a, b	012
211/000U	Melamine Green Matt / chalk (without magnetic effect)	Magnetic & Boards	1.0	b	012
325	Alu Brushed Champagne	Elements	1.0	a, b	001
325 SRM	Alu Brushed Champagne SRM	SRM	1.0	a, b	001 SR
325/360	Alu Brushed Sapphire Champagne	Perspectives/Geometries	1.0	a, b	001
342/000	Alu Plain Polished Goldtone	Elements	1.0	a, b	001
347/000	Alu Plain Polished Coppertone	Elements	1.0	a, b	001
401/200	Copper Crush	Gestures	1.3	a, b	009
401/200 SRM	Copper Crush SRM	SRM	1.3	a, b	009 SR
401/229	Copper Crush Stipple	Gestures	1.3	a, b	009
401/229 SRM	Copper Crush Stipple SRM	SRM	1.3	a, b	009 SR
409/000	Alu Brushed Steeltone - Industrial quality version of 446	Elements	0.8	a, b	001
423/980	Alu Plex Stainless Steeltone	Elements	1.0	a, b	001
431	Alu Crossbrushed Natural	Elements	1.0	a, b	001
431 SRM	Alu Crossbrushed Natural SRM	SRM	1.0	a, b	001 SR
433	Alu Crossbrushed Stainless Steeltone	Elements	1.0	a, b	001
434	Alu Crossbrushed Goldtone	Elements	1.0	a, b	001
437	Alu Crossbrushed Coppertone	Elements	1.0	a, b	001
439	Alu Crossbrushed Brownish Grey	Elements	1.0	a, b	001
439 SRM	Alu Crossbrushed Brownish Grey SRM	SRM	1.0	a, b	001 SR
441	Alu Brushed Natural	Elements	1.0	a, b, e	001
441 SRM	Alu Brushed Natural SRM	SRM	1.0	a, b	001 SR
442	Alu Brushed Goldtone	Elements	1.0	a, b	001
444/920N	Alu Riffel Horizontal Natural	Perspectives/Industrial	0.9	a, b	001
444N	Alu Plain Polished Natural	Elements	1.0	a, b	001
444N SRM	Alu Plain Polished Natural SRM	SRM	1.0	a, b	001 SR
446	Alu Brushed Steeltone	Elements	1.0	a, b, e	001

a = 2440 x 1220 mm
b = 3050 x 1220 mm
e = 3050 x 1300 mm

On request we will provide you with the Arpa and Formica code matrix. Please contact us.

LIST OF DECORS

Homapal Code	Decor Name	Range	Thickness	Size	Balancer
446 SRM	Alu Brushed Steeltone SRM	SRM	1.0	a, b	001 SR
446/920	Alu Riffel Horizontal Steeltone	Perspectives/Industrial	0.9	a, b	001
447	Alu Brushed Coppertone	Elements	1.0	a, b	001
447 SRM	Alu Brushed Coppertone SRM	SRM	1.0	a, b	001 SR
447/966	Alu Cella Coppertone	Perspectives/Depths	1.3	a, b	002
448	Alu Brushed Black	Elements	1.0	a, b	001
448/966	Alu Cella Black	Perspectives/Depths	1.3	a, b	002
451	Alu Brushed Bronzetone	Elements	1.0	a, b	001
451 SRM	Alu Brushed Bronzetone SRM	SRM	1.0	a, b	001 SR
451/100	Alu Mesh Bronzetone	Perspectives/Depths	1.3	a, b	002
451/360	Alu Brushed Sapphire Bronzetone	Perspectives/Geometries	1.0	a, b	001
454	Alu Brushed Rosegold	Elements	1.0	a, b	001
454 SRM	Alu Brushed Rosegold SRM	SRM	1.0	a, b	001 SR
454/360	Alu Brushed Sapphire Rosegold	Perspectives/Geometries	1.0	a, b	001
455/000 SRM	Alu Brushed Graphite SRM	SRM	1.0	a, b	001 SR
455/360	Alu Brushed Sapphire Graphite	Perspectives/Geometries	1.0	a, b	001
456	Alu Brushed Medium Bronzetone	Elements	1.0	a, b	001
456 SRM	Alu Brushed Medium Bronzetone SRM	SRM	1.0	a, b	001 SR
459/100	Alu Mesh Anthracite	Perspectives/Depths	1.3	a, b	002
469/920N	Alu Riffel Horizontal Anthracite	Perspectives/Industrial	0.9	a, b	001
470	Alu Mirror Polished Superior Natural	Elements	1.0	a, b	005/015
470/100	Alu Mirror Polished Mesh Natural	Perspectives/Depths	1.3	a	005/015
470/124	Alu Mirror Polished Cascade Natural	Perspectives/Depths	1.3	a	005/015
470/636	Alu Mirror Polished Lava Natural	Perspectives/Depths	1.3	a	005/015
470/966	Alu Mirror Polished Cella Natural	Perspectives/Depths	1.3	a	005/015
471	Alu Mirror Polished Goldtone	Elements	1.0	a, b	005/015
471/100	Alu Mirror Polished Mesh Goldtone	Perspectives/Depths	1.3	a	005/015
471/124	Alu Mirror Polished Cascade Goldtone	Perspectives/Depths	1.3	a	005/015

a = 2440 x 1220 mm
b = 3050 x 1220 mm
e = 3050 x 1300 mm

On request we will provide you with the Arpa and Formica code matrix. Please contact us.

LIST OF DECORS

Homapal Code	Decor Name	Range	Thickness	Size	Balancer
471/636	Alu Mirror Polished Lava Goldtone	Perspectives/Depths	1.3	a	005/015
471/966	Alu Mirror Polished Cella Goldtone	Perspectives/Depths	1.3	a	005/015
473	Alu Mirror Polished Tea	Elements	1.0	a, b	005/015
473/124	Alu Mirror Polished Cascade Tea	Perspectives/Depths	1.3	a	005/015
473/636	Alu Plain Polished Lava Tea	Perspectives/Depths	1.3	a	005/015
474	Alu Mirror Polished Smokey Grey	Elements	1.0	a, b	005/015
474/124	Alu Mirror Polished Cascade Smokey Grey	Perspectives/Depths	1.3	a	005/015
474/636	Alu Mirror Polished Lava Smokey Grey	Perspectives/Depths	1.3	a	005/015
474/966	Alu Mirror Polished Cella Smokey Grey	Perspectives/Depths	1.3	a	005/015
475/000	Alu Plain Polished Gunmetal Matt	Elements	1.0	a, b	005/015
475/636	Alu Plain Polished Lava Gunmetal Matt	Perspectives/Depths	1.3	a	005/015
477	Alu Mirror Polished Coppertone	Elements	1.0	a, b	005/015
477/124	Alu Mirror Polished Cascade Coppertone	Perspectives/Depths	1.3	a	005/015
477/636	Alu Mirror Polished Lava Coppertone	Perspectives/Depths	1.3	a	005/015
477/966	Alu Mirror Polished Cella Coppertone	Perspectives/Depths	1.3	a	005/015
485/000	Alu Mirror Polished Special Natural - Industrial quality version of 470	Elements	1.0	a, b	005/015
490	Copper Antique	Gestures	1.3	a, b	009
490 SRM	Copper Antique SRM	SRM	1.3	a, b	009 SR
500/340	Brass Diamond Antique (vertical joint at about 610 mm)	Perspectives/Geometries	1.3	a, b	009
500/340 SRM	Brass Diamond Antique SRM (vertical joint at about 610 mm)	SRM	1.3	a, b	009 SR
500/491	Brass Plain Antique (vertical joint at about 610 mm)	Gestures	1.0	a, b	009
500/502	Brass Moon (vertical joint at about 610 mm)	Gestures	1.3	a	009
546	Alu Brushed Stainless Steeltone	Elements	1.0	a, b	001
630	Copper Black Patinated	Gestures	1.3	a	002
635/502	Copper Moon Turquoise	Gestures	1.3	a	009
636/502	Copper Moon Dark	Gestures	1.3	a	009
637/502	Copper Moon Light	Gestures	1.3	a	009
641/000	Stainless Steel Brushed	Perspectives/Industrial	0.8	a, b	007

a = 2440 x 1220 mm
b = 3050 x 1220 mm
e = 3050 x 1300 mm

On request we will provide you with the Arpa and Formica code matrix. Please contact us.

LIST OF DECORS

Homapal Code	Decor Name	Range	Thickness	Size	Balancer
690/340	Copper Diamond Antique	Perspectives/Geometries	1.3	a, b	009
690/340 SRM	Copper Diamond Antique SRM	SRM	1.3	a, b	009 SR
695D	Copper Stratos Diagonal	Gestures	1.3	a, b	009
695D SRM	Copper Stratos Diagonal SRM	SRM	1.3	a, b	009 SR
704/966	Alu Cella Goldtone	Perspectives/Depths	1.3	a, b	002
791	Alu Brushed Natural Special - also available with Adverso (AD) surface	Elements	0.8	a, b	001
794	Alu Brushed Goldtone Special - also available with Adverso (AD) surface	Elements	0.8	a, b	001
796	Alu Brushed Steeltone Special - also available with Adverso (AD) surface	Elements	0.8	a, b	001
800/100	Alu Mesh Natural	Perspectives/Depths	1.3	a, b	002
800/200	Alu Crush	Gestures	1.0	a, b	001
800/200 SRM	Alu Crush SRM	SRM	1.0	a, b	001 SR
807/340	Alu Diamond Bronzetone	Perspectives/Geometries	1.0	a, b	002
807/980	Alu Plex Bronzetone	Elements	1.0	a, b	001
820/000	Alu Softmatt Natural - Industrial quality version of 444N	Elements	0.8	a, b	001
820/000 SRM	Alu Softmatt Natural SRM	SRM	0.8	a, b	001 SR
825/100	Alu Mesh Champagne	Perspectives/Depths	1.3	a, b	002
856	Alu Dots Steeltone	Perspectives/Industrial	1.3	a, b	002
8200	Magnetic Board for individual finish	Magnetic & Boards	1.0	a, b	8200
8202	Magnetic Board White Glossy with grid points (board marker)	Magnetic & Boards	1.0	a, b	011
8205	Magnetic Board Black Matt (chalk)	Magnetic & Boards	1.0	a, b	011
8206	Magnetic Board White Glossy (board marker)	Magnetic & Boards	1.0	a, b	011
8207	Magnetic Board White Matt (projection and board marker)	Magnetic & Boards	1.0	a, b	011
8208	Magnetic Board Light Grey Glossy (board marker)	Magnetic & Boards	1.0	a, b	011
8211	Magnetic Board Green Matt (chalk)	Magnetic & Boards	1.0	a, b	011
8214	Magnetic Board Smokey Blue Matt (chalk)	Magnetic & Boards	1.0	a, b	011
8224	Magnetic Board Stone Grey Glossy (board marker)	Magnetic & Boards	1.0	a, b	011
8225	Magnetic Board Stone Grey Matt (chalk)	Magnetic & Boards	1.0	a, b	011
8231	Magnetic Board Alu Crossbrushed Natural	Magnetic & Boards	1.3	a, b	011

a = 2440 x 1220 mm
b = 3050 x 1220 mm
e = 3050 x 1300 mm

On request we will provide you with the Arpa and Formica code matrix. Please contact us.

LIST OF DECORS

Homapal Code	Decor Name	Range	Thickness	Size	Balancer
8232	Magnetic Board Apple Green Glossy (board marker)	Magnetic & Boards	1.0	a, b	011
8233	Magnetic Board Macchiato Glossy (board marker)	Magnetic & Boards	1.0	a, b	011
8234	Magnetic Board Macchiato Matt (chalk)	Magnetic & Boards	1.0	a, b	011
8253	Magnetic Board Wine Red Matt (chalk)	Magnetic & Boards	1.0	a, b	011
8259	Magnetic Board Apple Green Matt (chalk)	Magnetic & Boards	1.0	a, b	011
8267	Magnetic Board Slate Black	Magnetic & Boards	1.0	a, b	011
8276	Magnetic Board Curry Matt (chalk)	Magnetic & Boards	1.0	a, b	011
8277	Magnetic Board Curry Glossy (board marker)	Magnetic & Boards	1.0	a, b	011
M2006	Alu Plain Polished Bronzestone	Elements	1.0	a, b	001
M4512	Alu Crush Goldtone	Gestures	1.0	a, b	001
M5308	Plex Aluminium	Elements	1.0	a, b	001
M5309	Plex Gold	Elements	1.0	a, b	001
M5311	Brushed Argent	Elements	1.0	a, b	001
M5312	Brushed Umbra	Elements	1.0	a, b	001
M5391	Graphite Veil	Gestures	1.3	a, b	002
M5392	Copper Veil	Gestures	1.3	a, b	009
M6422	Brushed Cupro	Elements	1.0	a, b	001
M6423	Brushed Brass	Elements	1.0	a, b	001
M6424	Plex Copper	Elements	1.0	a, b	001
M6426	Plex Brass	Elements	1.0	a, b	001
M6427	Hammered Aluminium	Perspectives/ Depths	1.3	b	002
M6428	Hammered Argent	Perspectives/ Depths	1.3	b	002
M6429	Hammered Cupro	Perspectives/ Depths	1.3	b	002
M6430	Hammered Brass	Perspectives/ Depths	1.3	b	002
M6431	Hammered Graphite	Perspectives/ Depths	1.3	b	002
M8547	Matte Oxibronze (vertical joint at about 610 mm)	Gestures	1.0	a, b	009
M9958	Antique Rubbed Copper	Gestures	1.3	a, b	009

a = 2440 x 1220 mm
b = 3050 x 1220 mm
e = 3050 x 1300 mm

On request we will provide you with the Arpa and Formica code matrix. Please contact us.

Product Information / Certifications

Reaction to fire - EN 13501-1

The reaction to fire of Homapal products is related to the final composite panel where a laminate is bonded to a substrate. Since the test results also depend on the substrate, the adhesive and the bonding techniques applied, the composite manufacturer is responsible for the correct execution of the test in accordance with the applicable standards and test methods required for the specific application field.

IMO Certification

Homapal products are tested for compliance in accordance with the Marine Equipment Directive (MED). Please inquire with Homapal about the scope and conditions applying to certification.



The mark of responsible forestry

Only products marked with FSC® are FSC® certified.

Homapal products are available with the “Forestry Stewardship Council (FSC)” certification upon request, in restricted quantities and jurisdictions.

Product Overview

This excerpt from the set of technical information is intended for guidance only and must not be used as any basis for processing Homapal products. Detailed technical information on the various products is available on www.homapal.com

Board panel sizes:
Refer to symbols provided in the list of decors.

Board panel thicknesses:
Depending on production method: 0.8 – 1.3 mm.
For some decors, compact boards are available on request in a maximum thickness of 10 mm.

Temperature load:
Homapal products are not recommended for applications where it is exposed to heat sources that can raise the material temperature to over 80°C. Prolonged or extreme heat can cause damage to the surface. To prevent heat damages on surfaces of Homapal products, always place a trivet or a heat protection pad underneath hot objects, such as hot pans, frying pans, coffee pots, etc. Never put hot objects or other heat sources directly onto a work surface made with products from Homapal. For detailed information on care and maintenance please visit www.homapal.com. Our warranty does not cover damage resulting from failure to comply with our instructions and guidelines, including but not limited to damage caused by physical impact, chemical impact (e.g., harsh cleaning agents and solvents), thermal impact (e.g., excessive heat of objects or appliances above 80°C) or misuse.

Hygiene/cleaning:
Homapal metal laminates have a sealed, hygienic surface. Homapal metal laminates are easy to clean with water and soapy water. A soft, non-linting cloth should always be used for cleaning. Highly alkaline, highly acidic as well as cleaning products containing scouring agents must not be used. Do not use any solvent-based cleaning products. magnetic boards have a sealed, hygienic surface. With regard to the specific surface properties of the various product options, we draw attention to our technical data sheets. Depending on product type, a cotton cloth or microfibre cloth can be used for cleaning. Under no circumstances must moisturising cleansers, such as dishwashing detergents, be used. Kindly refer to our latest cleaning guidelines available on our website.

Formaldehyde:
The Homapal metal and magnetic board collections have been tested for formaldehyde emissions under DIN EN 717-1. For further information, visit our website.

Processing:
Homapal laminates can be sawn, milled and drilled in the same way as all standard laminates (HPL) using carbide-tipped cutting tools. When machining stainless steel laminates and magnetic boards, please observe our detailed, technical information. Homapal magnetic boards should either be bonded with contact adhesive or with adhesives with a high solids content. Always observe the maximum pressing temperatures and pressures that are specified for the various products in our technical information. Homapal laminates can be bonded to various substrate materials. The substrate should be selected for its characteristics as well as the characteristics of the application, the intended use of the composite panel, and the installation environment. For the surface Homapal thin sheets to appear smooth and uniform, the surface of the substrate should also be of similar characteristics. Imperfections on the substrate in fact, tend to be transferred to the sheet surface, especially if the final laminate is very thin. The choice and application of adhesives, from among the many types available, should be determined by the type of substrate and the purpose of the finished product and the glue manufacturer guidelines. Information on bonding of Homapal products to substrates is given on www.homapal.com under the download section.

Customized designs:
Available, depending on quantity.

All Homapal laminates are provided with a protective film to prevent damage during transportation. Whereas Homapal metal laminates and Homapal magnetic boards are only recommended for vertical use in decorative applications, stainless steel laminates can, in some cases, also be used horizontally. Homapal SRM can be used horizontally. Please refer to our separate technical specifications in this regard. Use in rooms exposed to moisture cannot be recommended. Our products, especially the SRM surfaces, are improving constantly. Please understand that changes of our delivery program are possible at any time. Therefore order/review our most current datasheet before processing.

Status: May 2022

DISCLAIMER

GENERAL

These terms apply to the use of this document and such use automatically means that the other party agrees to these terms. The information provided by Homapal GmbH („Homapal“) in this document is solely indicative. Homapal is unable to warrant the accuracy and completeness of this information. Homapal may change the information included in this document at any time and without further notice. Homapal's customers and third parties must ascertain that they have the most recent document (for the most recent version, please consult: www.homapal.com). No rights can be derived from the information provided; the use of the information is at the other party's risk and responsibility. Homapal does not warrant that the information in this document is suitable for the purpose for which it is consulted by the other party. This document does not contain any design, structural calculation, estimate or other warranty or representation that customers and third parties may rely on. This document does not guarantee any properties of Homapal products. Colours used in Homapal's communications (including but not limited to printed matter) and in samples of Homapal's products may differ from the colours of the Homapal products to be supplied. Samples are not intended for use in product tests and are not representative of characteristics of the Homapal products. Homapal's products and samples are produced within the specified colour tolerances and the colours (of production batches) may differ, even if the same colour is used. The viewing angle also influences the colour perception. Metallic panels feature a surface whose colour appears to change based on the direction from which it is viewed. The specified colour stability and colour specifications relate only to the decorative surface of the Homapal products, not to the core material and samples of the Homapal products. Customers and third parties must have a professional adviser inform them about (the suitability of) the Homapal products for all desired applications and about applicable laws and regulations. Homapal does not warrant the above. The most recent version of the current delivery programme and the Technical Data Sheet can be found at www.homapal.com. Only the information in the most recent and valid Technical Data Sheet should be used to select and provide advice regarding Homapal products. Homapal reserves the right to change (the specifications for) its products without prior notice.



FABRICADOS REYNA S.A.

Autovía Madrid-Toledo (A-42), km. 29,5 · 28978 Cubas de la Sagra - Madrid • Teléfono: 91 810 64 00
www.reyna.es